

## Scott Hedlund

---

**From:** Scott Hedlund  
**Sent:** Thursday, May 29, 2025 5:00 PM  
**To:** Scott Hedlund  
**Subject:** Sauk Rapids 2024 2nd Avenue South project - Project Update – May 29, 2025  
**Attachments:** Xcel Energy - 111244606 - 2nd Ave S Closures - Sauk Rapids.pdf

Residents and Project Stakeholders:

The project team would like to thank you again for your patience during construction. **Expect some minor disruption from your normal day to day routine in the coming weeks.** Feel free to continue to contact SEH with any questions or concerns regarding the project. We hope to respond in a timely manner. However, when more than one team member needs to be consulted, it may take a little longer to provide you with accurate up-to-date information.

Just a reminder that Jeff Supan, SEH's Field Representative, is on-site during active construction to observe project progress. He is the fastest link to problem solving because he communicates directly with everyone on the construction team. Do not hesitate to contact Jeff at 320.250.3381 with any questions you may have. If you are unable to reach Jeff in the field, please contact Scott Hedlund at 612.865.3509 in the SEH office.

Please pass along this update to others in your home or adjacent residents and encourage them to provide email address to me to get added to this distribution list.

### [Project Schedule/ Upcoming Work:](#)

The City's Contractor is gearing up to finish the project and has given the following tentative schedule for the coming weeks, subject to change and the weather:

- Week of June 2<sup>nd</sup>:
  - Lawn seeding touch-up work
- Week of June 9<sup>th</sup>:
  - Milling off the temporary bituminous wedges near curb lines (Monday the 9<sup>th</sup>)
  - Casting adjustments in preparation for paving
  - **Bituminous final lift street paving** (Wednesday the 11<sup>th</sup>, Thursday the 12<sup>th</sup>)
- Week of June 16<sup>th</sup>:
  - Final pavement markings (ie striping)
- Remainder of June:
  - Miscellaneous punch list and project closeout work.

**Please remember that construction schedules can change at a moment's notice because of weather, delays by subcontractors, or other unforeseen events.**

### [Private Utility Work Remains:](#)

Last year, **Xcel Energy natural gas crews** were unsuccessful with their efforts to directional drill a new underground pipeline crossing of Benton Drive and the railroad tracks east of 2<sup>nd</sup> Avenue South. Xcel has

advised they **will be making another attempt in June**. Their current plan is to start setting up on the north side of Benton Drive on **June 13<sup>th</sup>**. They expect to be done before the end of July. **During the 6 weeks of Xcel's work, portions of 2<sup>nd</sup> Avenue South will be closed**. Initially the 2<sup>nd</sup> Avenue South closure will be on the north side of Benton Drive up to 4<sup>th</sup> Street South. As their work progresses, 2<sup>nd</sup> Avenue South will be closed between Benton Drive and 7<sup>th</sup> St So including closing the railroad crossing. There will be posted detour routes for the closure areas – see the attached maps from Xcel. Note, **the City of Sauk Rapids does not control the activities and operations of the private utility companies**.

#### Seeding and Turf Establishment:

The Contractor is in the process of monitoring growth and addressing erosion issues in areas that were seeded last fall until the turf is adequately established. Your effort in helping to care for your new lawn will be essential to having it look its best.

Grass seed requires moisture to germinate and grow. If you observe that your lawn is beginning to dry out, we recommend lightly watering the grass seed to help with the process.

Begin mowing when the new grass lays over and mats down when wetted or the new grass goes to seed. Frequent mowing once established will help the grass overtake any weed growth.

#### 24-hour Emergency Contact:

If you need assistance related to access or other construction related problems, the primary contact from **LaTour Construction is Steve LaTour, phone number (612)-366-6023**.

#### Access During Paving Operations and On-Street Parking:

You should anticipate some inconveniences and minor delays when crews are working directly in front of your driveway, in particular while paving and striping operations are occurring.

Please continue to refrain from on-street parking within the project limits during daylight hours through June.

#### Work Zones:

Notice on Construction Zone Activities:

- **All of the City Contractor's remaining work is planned to be completed under traffic.**
- Road work signs, other temporary signage, and or flaggers will be in place in the project areas to warn motorists and protect workers during construction. Please pay careful attention to the warning signs and flaggers. Please exercise caution as you navigate the work zones.

#### Project Website:

Please note the link below, which includes information about the project.

Link: <https://www.sehinc.com/2ndavesouth>

Thank you,

Scott D. Hedlund, PE (MN, LA), PMP

**Sauk Rapids City Engineer**

Principal, Project Manager

Short Elliott Hendrickson, Inc.

612.865.3509 mobile

Building a Better World for All of Us®

Follow [SEH](#) on [Twitter](#) | [Facebook](#) | [LinkedIn](#) | [Instagram](#)

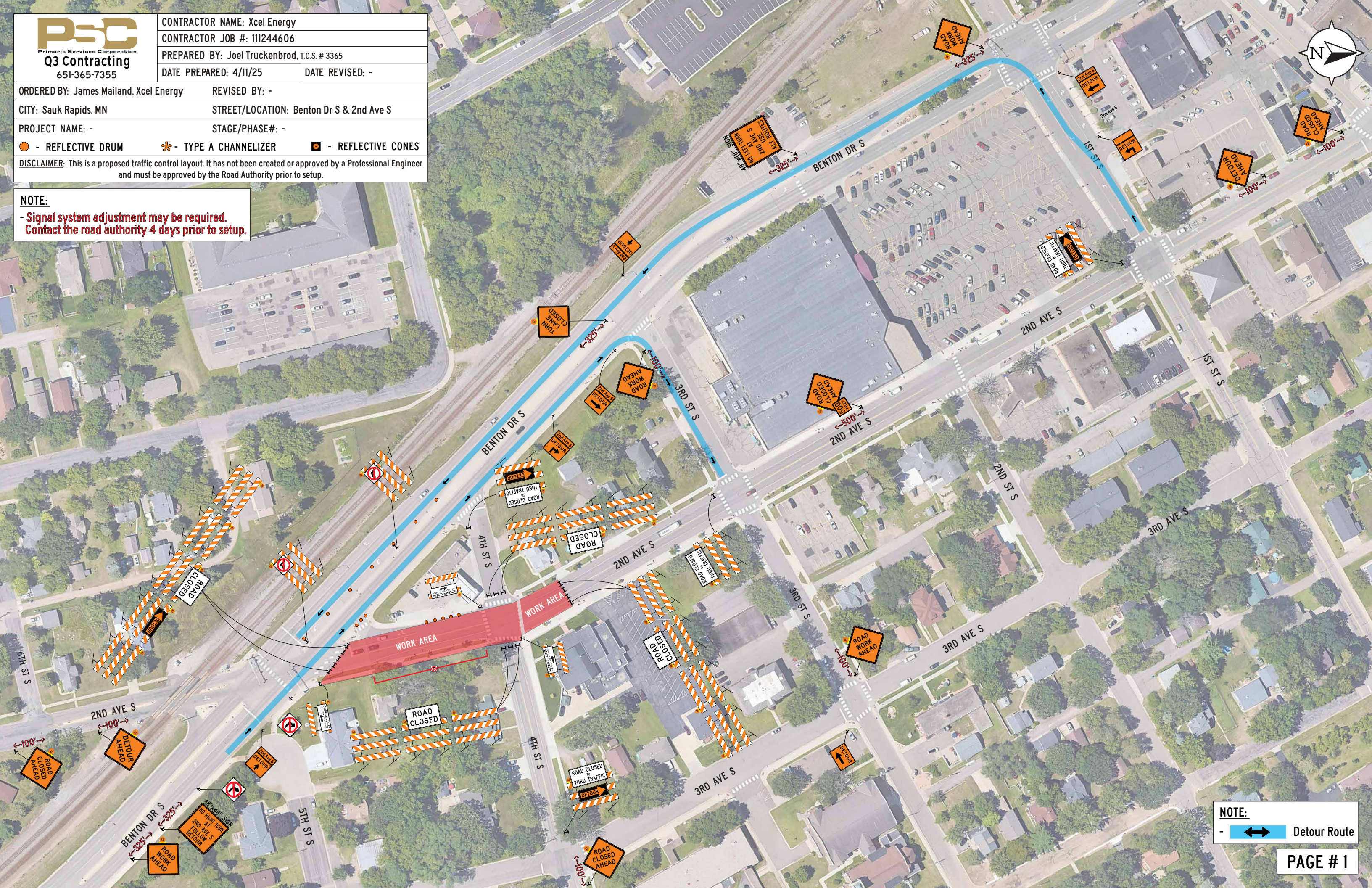


ORDERED BY: James Mailand, Xcel Energy	REVISED BY: -
CITY: Sauk Rapids, MN	STREET/LOCATION: Benton Dr S & 2nd Ave S
PROJECT NAME: -	STAGE/PHASE#: -

● - REFLECTIVE DRUM    ✱ - TYPE A CHANNELIZER    ● - REFLECTIVE CONES

DISCLAIMER: This is a proposed traffic control layout. It has not been created or approved by a Professional Engineer and must be approved by the Road Authority prior to setup.

NOTE:  
- Signal system adjustment may be required.  
Contact the road authority 4 days prior to setup.



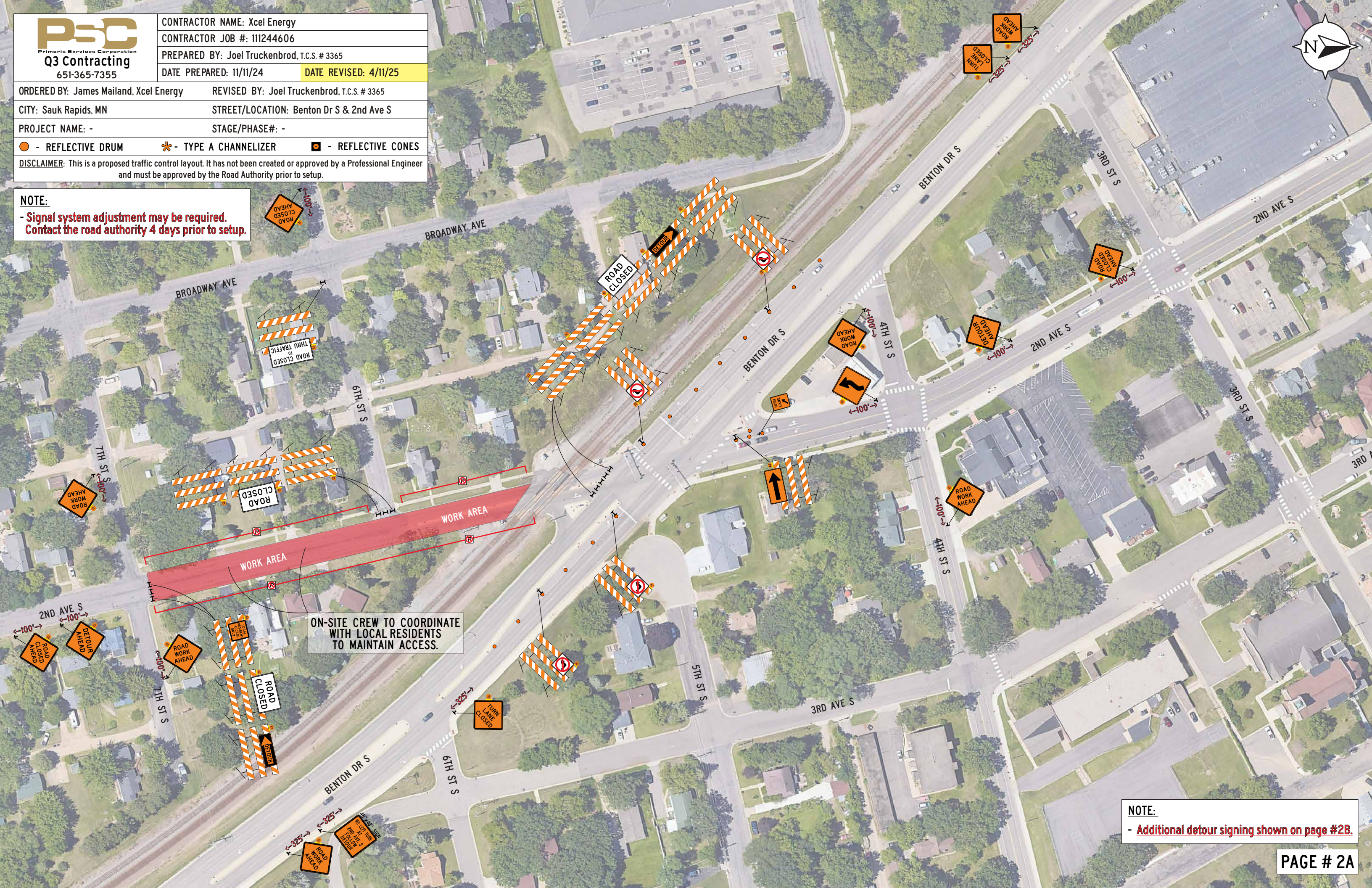
NOTE:  
- Detour Route



ORDERED BY: James Mailand, Xcel Energy      REVISED BY: Joel Truckenbrod, T.C.S. # 3365  
CITY: Sauk Rapids, MN      STREET/LOCATION: Benton Dr S & 2nd Ave S  
PROJECT NAME: -      STAGE/PHASE#: -

● - REFLECTIVE DRUM      ✱ - TYPE A CHANNELIZER      ● - REFLECTIVE CONES  
DISCLAIMER: This is a proposed traffic control layout. It has not been created or approved by a Professional Engineer and must be approved by the Road Authority prior to setup.

**NOTE:**  
- Signal system adjustment may be required.  
Contact the road authority 4 days prior to setup.



**NOTE:**  
- Additional detour signing shown on page #2B.





DATE REVISED: 4/11/25

 - REFLECTIVE CONES

**DISCLAIMER:** This is a proposed traffic control layout. It has not been created or approved by a Professional Engineer and must be approved by the Road Authority prior to setup.



**CLOSURE SIGNING  
SHOWN ON PAGE # 2A**

-  Detour Route
- Closure signing shown on page #2A.

**PAGE # 2B**