

## 2024 2nd Avenue South Improvements

# Project Update



SAUKR 168340

### Project Team

#### SEH Project Manager

Scott Hedlund, PE

612.865.3509

[shedlund@sehinc.com](mailto:shedlund@sehinc.com)

#### SEH Project Engineer

Neil Heinonen, PE

320.250.2090

[nheinonen@sehinc.com](mailto:nheinonen@sehinc.com)

#### SEH Field Representative

Jeff Supan

320.250.3381

[jsupan@sehinc.com](mailto:jsupan@sehinc.com)

#### City of Sauk Rapids

Ross Olson

320.258.5315

#### General Contractor

LaTour Construction, Inc.

Michael LaTour

612.968.4573

Steve LaTour

612.399.6023



June 2024 | Project Update No. 1

Hello and welcome to the *2024 2nd Avenue South Improvements Project Update*. In this issue, we will be updating you on the project status. If you wish to receive future Project Updates via email, please provide your email to Melissa Blommel at [mblommel@sehinc.com](mailto:mblommel@sehinc.com).

Future Project Updates will be posted online or via email. The intent is for all updates to be **ELECTRONIC ONLY** by email or on the project website.

Project Website: <https://www.sehinc.com/2ndavesouth>

The project team consists of the City of Sauk Rapids, SEH, and LaTour Construction, Inc. SEH is the engineering firm that serves as the City Engineer for the City of Sauk Rapids and will serve as the contact between the contractors and residents/property owners. All questions should initially be directed to SEH.

Jeff Supan, SEH's Field Representative, will be on-site during active construction to observe project progress. He is the fastest link to problem solving because he communicates directly with everyone on the construction team. Do not hesitate to contact Jeff at 320.250.3381 with any questions you may have. If you are unable to reach Jeff in the field, please contact Neil Heinonen at 320.250.2090 in the SEH office.

## Project Status and Schedule

The project work is **expected to begin on Monday, June 17<sup>th</sup>**. Initial work will include road closures and removal of the roadway surface, curb & gutter, and driveways. After this, installation of City utilities (sanitary sewer, watermain, and storm sewer) will commence.

The City of Sauk Rapids publicly bid the project and awarded the construction contract to the low bidder LaTour Construction, Inc. of Maple Lake, MN. LaTour Construction is the General Contractor responsible for the overall project and will install the open cut underground utilities (sanitary sewer, water main, and storm sewer).

Subcontractors for other work items include:

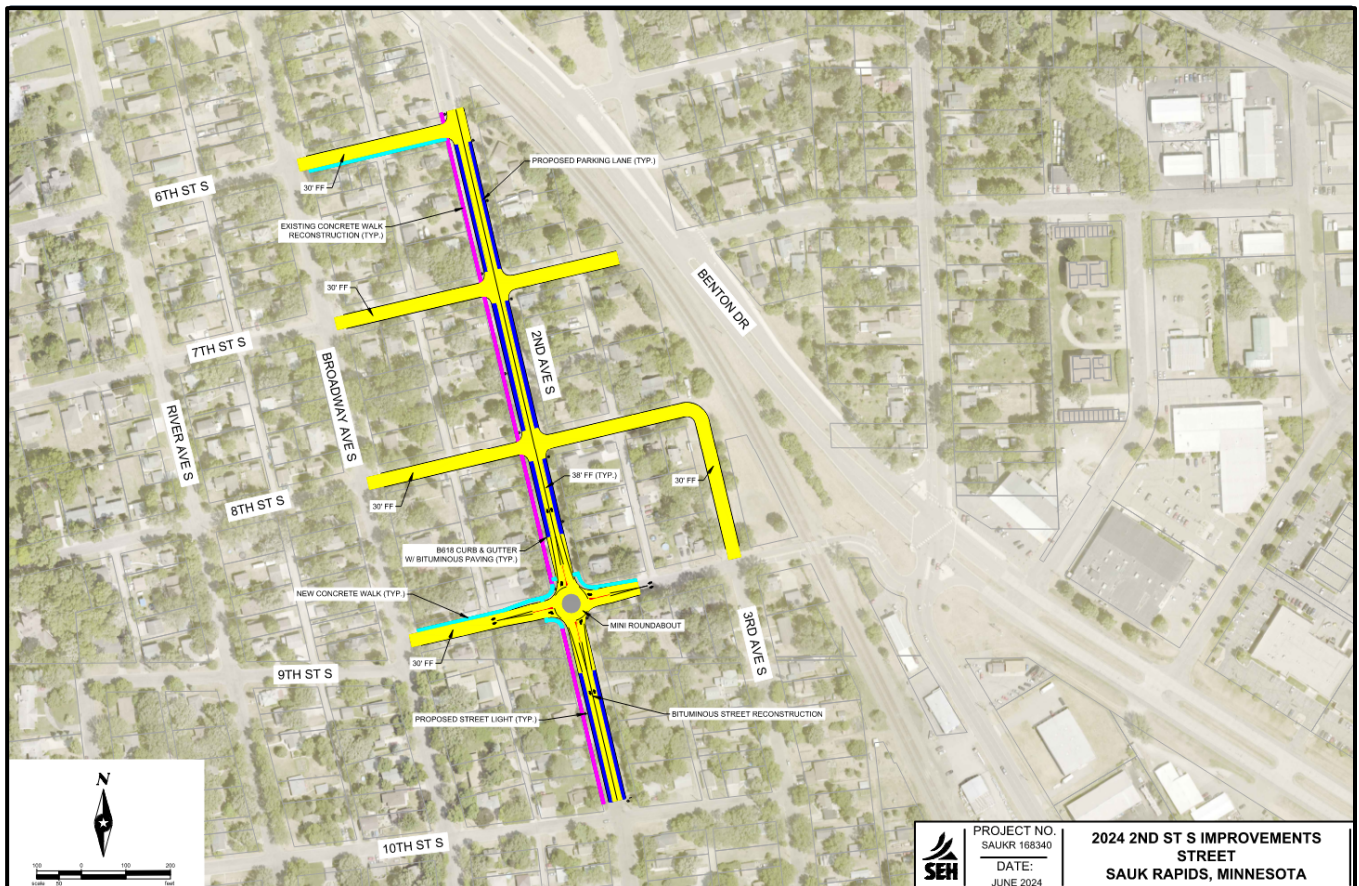
- All State Traffic / Rice Contracting / MN Paving and Materials / West Star Curb
- Additional subcontractors will be utilized for lighting work, fence work, landscaping, seeding, and other work items

You have probably noticed private utility companies (electricity, natural gas, telephone, cable TV, etc.) marking their private utilities in the project area already. You likely noticed the relocation of private utility lines (electric/gas/communication lines) over the course of the past couple months. This work will continue ahead of the primary road and utility construction process. Relocation of private utilities was necessary to avoid construction conflicts with proposed street and public utility construction. Other relocation work by some of the other utilities may be necessary. As a reminder, any service interruption will be communicated by the utility owner. Note, the City and LaTour Construction do not direct or control the operations for these private utilities.

## Description of Project

This is a full street and utility reconstruction project. The project scope includes replacing the existing street and sidewalks, sanitary sewer, water main, services in the streets, and storm sewer system. The project includes construction of a new mini round-a-bout at the intersection of 2<sup>nd</sup> Avenue South and 9<sup>th</sup> Street South. Refer to the project map included here for a depiction of the project area.

## Project Location



## Temporary Water

In order to build the new water main, the contractor will need to shut off the existing water system. As a result of this disconnect, the Contractor will be supplying you with an above-ground, temporary water service that will be in place throughout construction. Once the new water main is in place and passes all required disinfection testing, the contractor will remove your temporary service and reconnect you to the new pipe. You may experience small outages in water service while the contractor switches back and forth between the existing system and the temporary system; however, efforts will be made to minimize disruption to the water service. There will be further notices on this item, delivered by the Contractor to alert residents of impacts or changes.

## Your Sewer and Water Service

The scope of this project is to replace your water service (and in a few cases the sanitary sewer service) to the shut off valve or property line/edge of right of way (generally 10– to 12-feet behind the curb). If you have a galvanized iron water service and/or had problems with tree roots in your sewer service, you may want to consider replacing those services back to your house. If you decide to have this done, you will be responsible for contacting a Contractor to do the work. In many cases, sewer is in the alley, and the services will not be replaced to your home. Several homes throughout the project area are having services replaced as part of a separate project. If you have had previous interactions with City or SEH Staff, please contact the project team members from SEH to assist with coordination of the service work.

## Frequently Asked Questions

**Q:** *What kind of activity can I expect during construction?*

**A:** Construction activity will include removal of pavement, stripping of topsoil, excavation for road or driveway grading, and deep utility excavations for the sanitary sewer, water mains and storm sewer.

Construction is tedious, and we understand it can get old quickly. At times, it may even seem like not much is getting done. Remember, patience is the biggest asset that each of you bring to the job. If you keep in mind the fact that this project will be completed, hopefully construction will seem to go faster for you!

In addition to the General Contractor, there will be several subcontractors working at various times on site. There will also be private utility companies (gas, cable television, telephone, and electric) on the site locating, moving, and or replacing existing lines. Please bear with us, the General Contractor has a fixed amount of time to get the work done, and we will be working with all parties involved to help see that this time commitment is met.

**Q:** *What will be done about construction dust?*

**A:** The contract provides for the Contractor to spread water on the road to help keep dust from creating an unsafe environment. However, this is an imperfect solution and will not solve the problem completely.

**Q:** *What will happen to the landscaping, fences, or planters that are on the boulevards?*

**A:** If you have landscaping or plantings in the right of way, it is up to each homeowner to remove any landscaping materials, shrubs, or flowers that they would like to keep. The Contractor will remove material that is left in the right of way if it is impacted by construction. The Contractor will not reinstall any landscaping removed from the right-of-way or easement areas. Flowers by mailboxes will be removed and not replaced.

**Q:** *What will happen to my sprinkler system or pet containment system during construction?*

**A:** Due to nature of the project, it is anticipated there may be impacts to sprinklers or pet containment systems behind the back of the curb. Property owners who have a sprinkler system or pet containment system in the right-of-way and next to the edge of curb and gutter are encouraged to contact Jeff Supan at 320.250.3381 to inquire on potential impacts. It may be necessary for you to temporarily remove a portion of your sprinkler or pet containment system within the public right-of-way or public easement area. The sprinkler distribution pipes should be exposed and pulled up to the property line, so they are visible to the Contractor. Since the sprinkler heads are often the most expensive component of the system, consider removing them from the distribution pipes. Apply duct tape to the end of the pipes to keep out dirt and debris. The City and Contractor will not be liable for damage to sprinkler systems that are installed within the public right-of-way. Residents should reinstall the systems after the turf restoration work is complete.

**Q:** *How will the turf areas disturbed by construction be restored?*

**A:** The Contractor will repair the disturbed areas of your yard with topsoil and seed. It is essential that you water the new seed regularly to help it establish. It is essential that you water the new seed regularly if you want a lush, green, well-established lawn.

**Q:** *What about my garbage and recycling during construction?*

**A:** You will continue to place your garbage and recycling containers at the end of your driveway/alley location as normal. The General Contractor will collect and get them to a location the garbage and recycling company can dispose of the items. The Contractor will then bring your container back to your driveway/alley location.

**Q:** *How will I receive my mail during construction (not applicable for PO boxes)?*

**A:** The Contractor will communicate impacts to mail service and temporary locations of mailboxes to each resident. If your mailbox is on your home, mail delivery may continue. The Contractor will communicate any impacts to mail service.

## URGENT IMMEDIATE ATTENTION NEEDED

### Special Information

It is very important that anyone who may need special considerations for access or has mobility limitations or with disabilities contact us as soon as possible. We are in the process of working with emergency response organizations to locate any residences that may require special consideration so we are fully aware of the issues throughout construction and if quick response is needed to any specific residence(s), there is a plan in place. Contact Jeff Supan with SEH at 320.250.3381.



### Preservation of Construction Stakes and Utility Flags We need your help!

Please do not remove any wooden stakes you will see temporarily placed on the boulevards. These stakes are used by the Contractor to construct the project and are expensive to replace.

Also, please do not remove or relocate the colored utility location flags. These flags, in conjunction with the spray paint markings on the ground, are necessary for the Contractor to locate buried utilities. We understand these flags may be unsightly and difficult to mow around, but we need your help to protect the construction crews and residents in your neighborhood.

Your help in keeping bystanders away from the construction area will ensure the project will progress safely.



## Construction Zone

Barricade and road closure signs may be installed throughout the project area to protect motorists during construction. Please pay careful attention to the warning signs! "Road Closed" signs are used where the road is impassable and closed to all traffic except for the Contractor's equipment or officially authorized vehicles. "Road Closed to Thru Traffic" signs are used where through traffic must detour to avoid a closure some distance beyond the sign, but where local traffic can move up to the point of closure. In this instance, local traffic would be defined as residential traffic from the particular street under construction.

After traffic control signs have been installed throughout the project, please avoid parking on the street.

There will also be times during construction that direct access to your driveway will be limited, particularly when watermain or storm sewer is being installed, the road is being subcut/graded, when concrete is being placed and is curing, and when fresh, hot bituminous is being constructed. Access to your property is important to us, and the Contractor will work to minimize those times that access must be limited.

As the Contractor's operations move during the course of construction, you may observe that signs and barricades move as well. We understand this may be frustrating! Please allow extra time in your schedule as you drive through the construction zone. Please advise your family and guests to exercise caution and safe driving speeds. Be sure workers and heavy equipment operators see you before driving around them.

Short Elliott Hendrickson Inc.  
2351 Connecticut Avenue, Suite 300  
Sartell, MN 56377-2485



«OwnerName»  
«OwnerAddress1»  
«OwnerCityStZip»

## Project Update

**2024 2nd Avenue South Improvements**  
**Sauk Rapids, Minnesota**

Affirmative Action–Equal Opportunity Employer