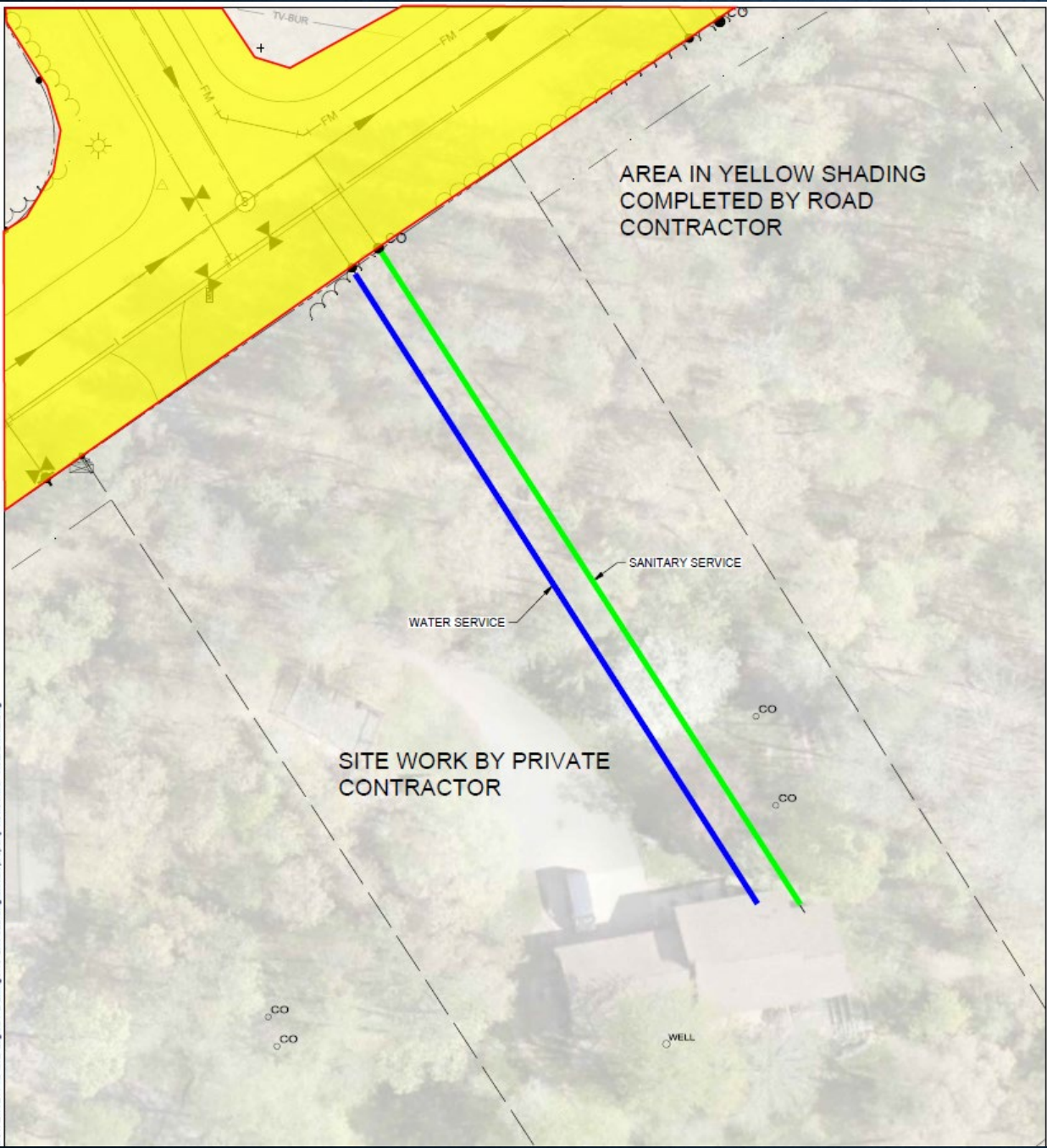


# SEWER & WATER SERVICE PRESENTATION

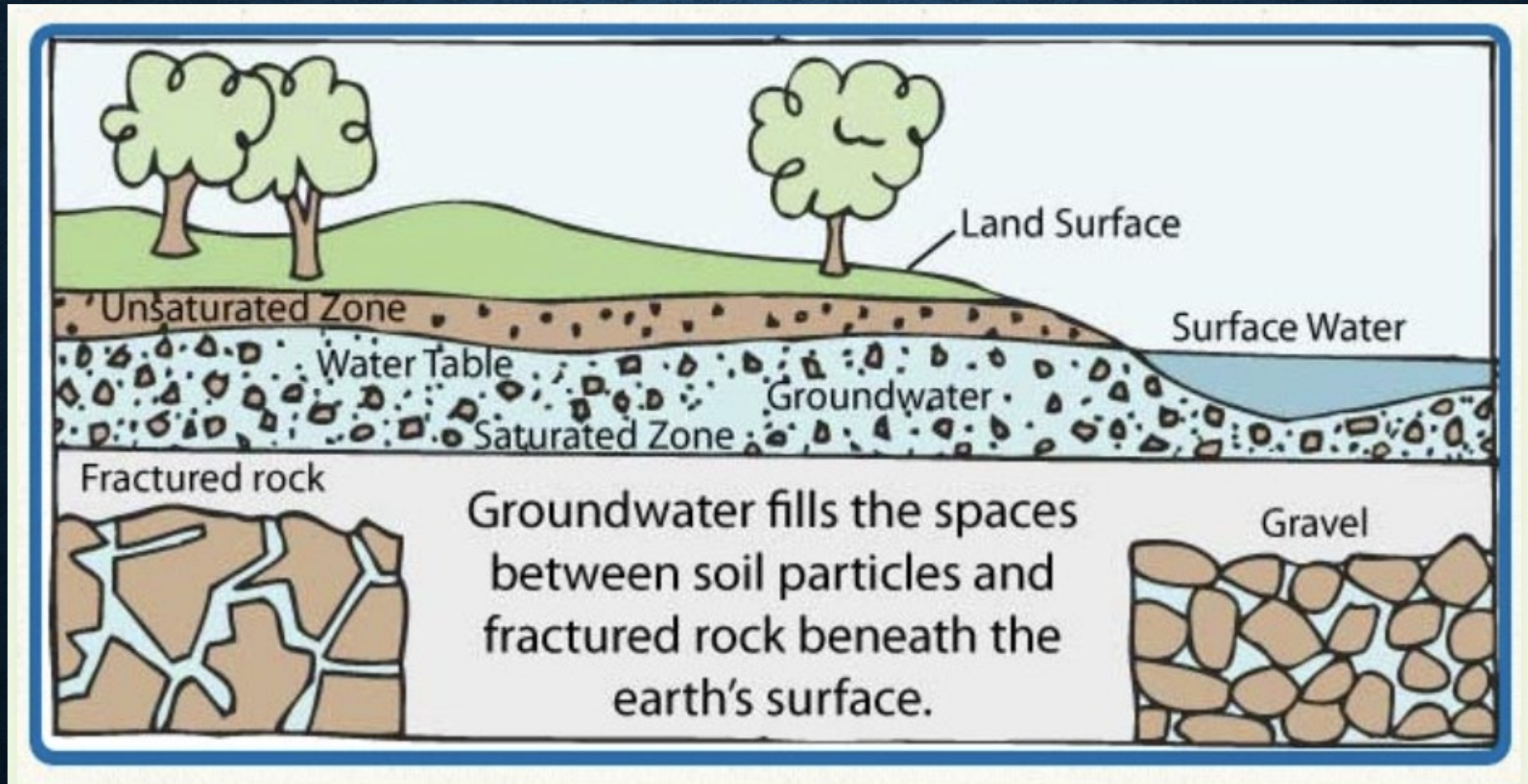


# PRIVATE SERVICE CONNECTION

# WILL I HAVE GROUNDWATER ISSUES?

- North Lynndale Area – High Groundwater
- Clearwater Road
  - Typical Year – Groundwater will likely be an issue, right at curb stop height.
  - Wet Year – Groundwater will be a major issue
  - Dry Year – Likely be able to install services without dewatering
- Brentwood Circle – Groundwater should not be an issue.

# GROUNDWATER EXHIBIT



Adopted from California Water Boards

[https://www.waterboards.ca.gov/water\\_issues/programs/groundwater/gw\\_basics.html](https://www.waterboards.ca.gov/water_issues/programs/groundwater/gw_basics.html)

# DIGGING IN THE GROUNDWATER



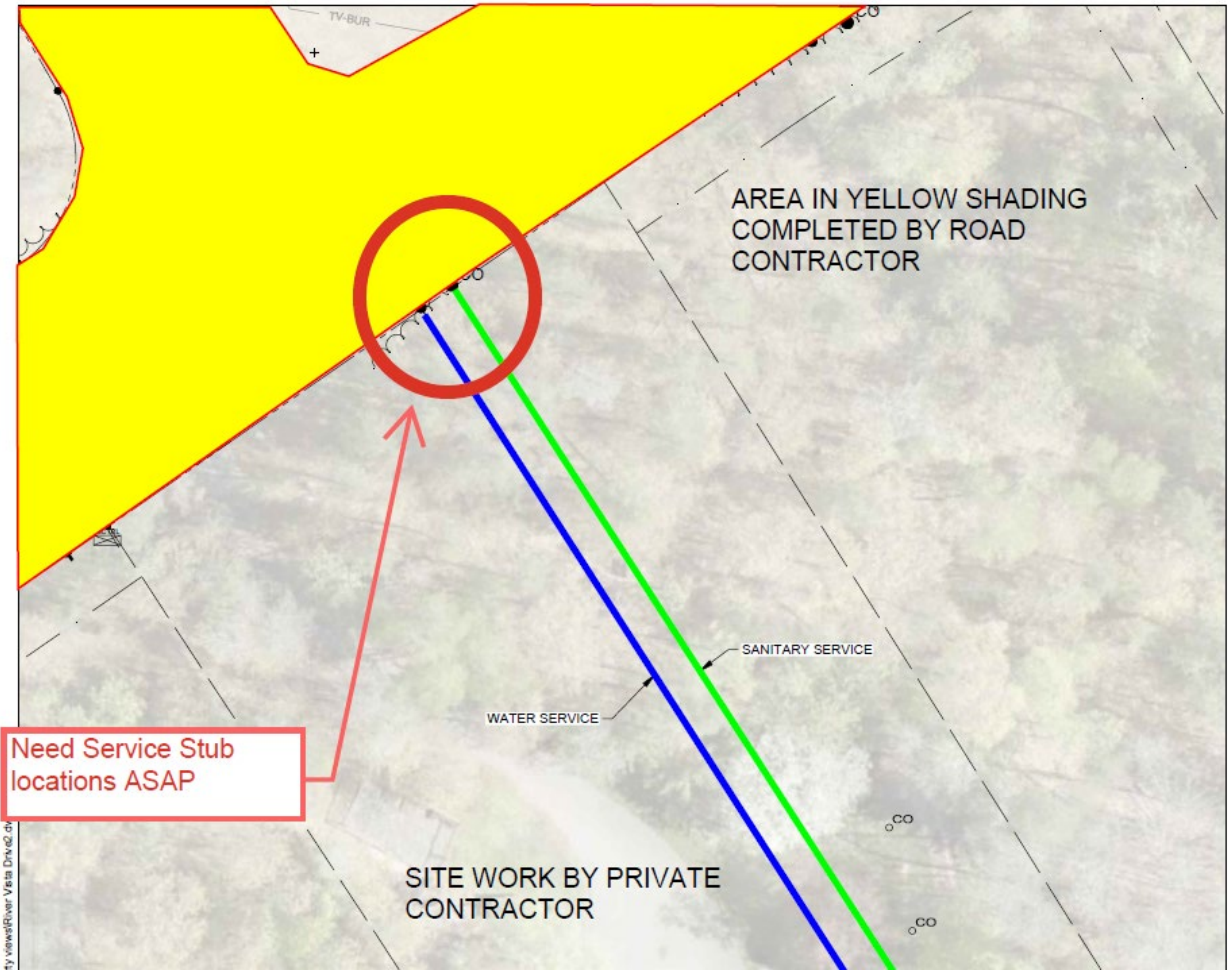
Credit: Margaret Burlingham - stock.adobe.com

Author: The Conversation

Published: 3:03 PM PDT July 9, 2024

Updated: 3:49 PM PDT July 9, 2024





# COORDINATING SERVICE STUB LOCATIONS

- (A) - THREADED PLUG SET WITH PLUMBERS WAX.
- (B) - MIN. 14" X 19" IRRIGATION BOX (NEENAH R-1976 FRAME & COVER IN PAVED AREAS)
- (C) - CONTRACTOR SUPPLIED MAGNETIZED TRACER BOX WITH GREEN TOP

INSTALL 5' STEEL T-POST (INCIDENTAL, PAINT GREEN)

ROW EASEMENT

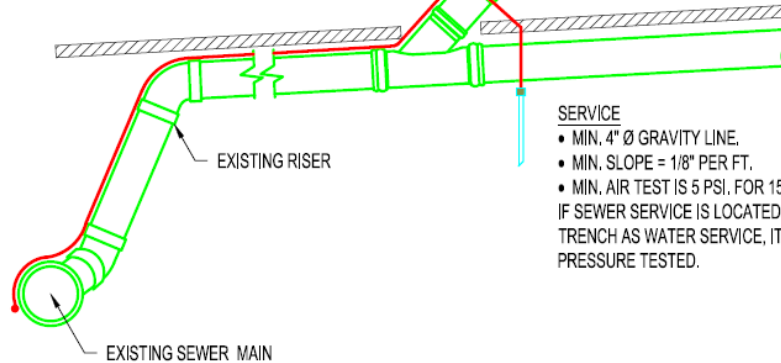
GROUND LINE

- CLEANOUT (REQUIRED AT RIGHT OF WAY)
- CLEANOUT (REQUIRED AT ALL DIRECTIONAL BENDS MORE THAN 45°)
- MINIMUM 4" Ø x 3034 PVC
- MAXIMUM CLEANOUT SPACING = 100'
- EXTEND YARD CLEANOUTS 2" ABOVE FINAL GRADE

2" x 4" WIDE INSULATION REQUIRED IF SERVICE IS LESS THAN 6' DEEP.  
 4" x 8" WIDE INSULATION REQUIRED IF SERVICE IS 4' OR LESS.

\* UNDER HARD SURFACES (DRIVEWAYS / PARKING AREAS)  
 • REQUIRED IF SERVICE IS LESS THAN 8'  
 2" x 4" WIDE INSULATION REQUIRED.  
 • REQUIRED IF SERVICE IS LESS THAN 6'  
 4" x 8" WIDE INSULATION REQUIRED.

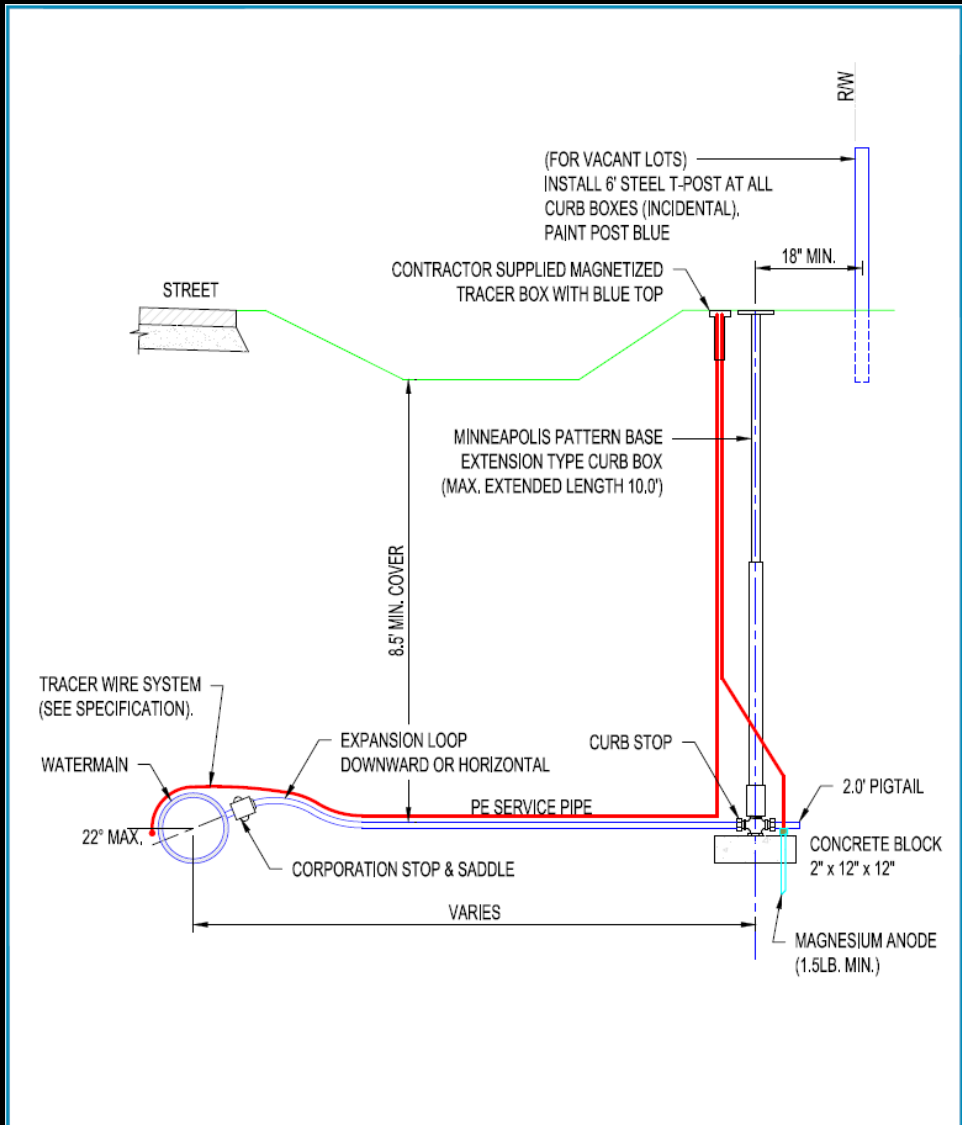
SERVICE  
 • MIN. 4" Ø GRAVITY LINE.  
 • MIN. SLOPE = 1/8" PER FT.  
 • MIN. AIR TEST IS 5 PSI. FOR 15 MIN.  
 IF SEWER SERVICE IS LOCATED IN THE SAME TRENCH AS WATER SERVICE, IT MUST BE PRESSURE TESTED.



CITY OF BAXTER, MINNESOTA  
 TYPICAL SANITARY SERVICE CONNECTION  
 (RESIDENTIAL)  
 PUBLIC WORKS DEPARTMENT

REV. 9-17

S-12



CITY OF BAXTER, MINNESOTA	REV. 1-20
TYPICAL WATER SERVICE	
PUBLIC WORKS DEPARTMENT	W-2

# Service Connection Information

Private contractor to coordinate with city for connection timing during construction.

- Dewatering will be shut off 2 weeks after completion of mainline utilities.

Stub water service and sewer service into house until city utilities are available in fall of 2026.

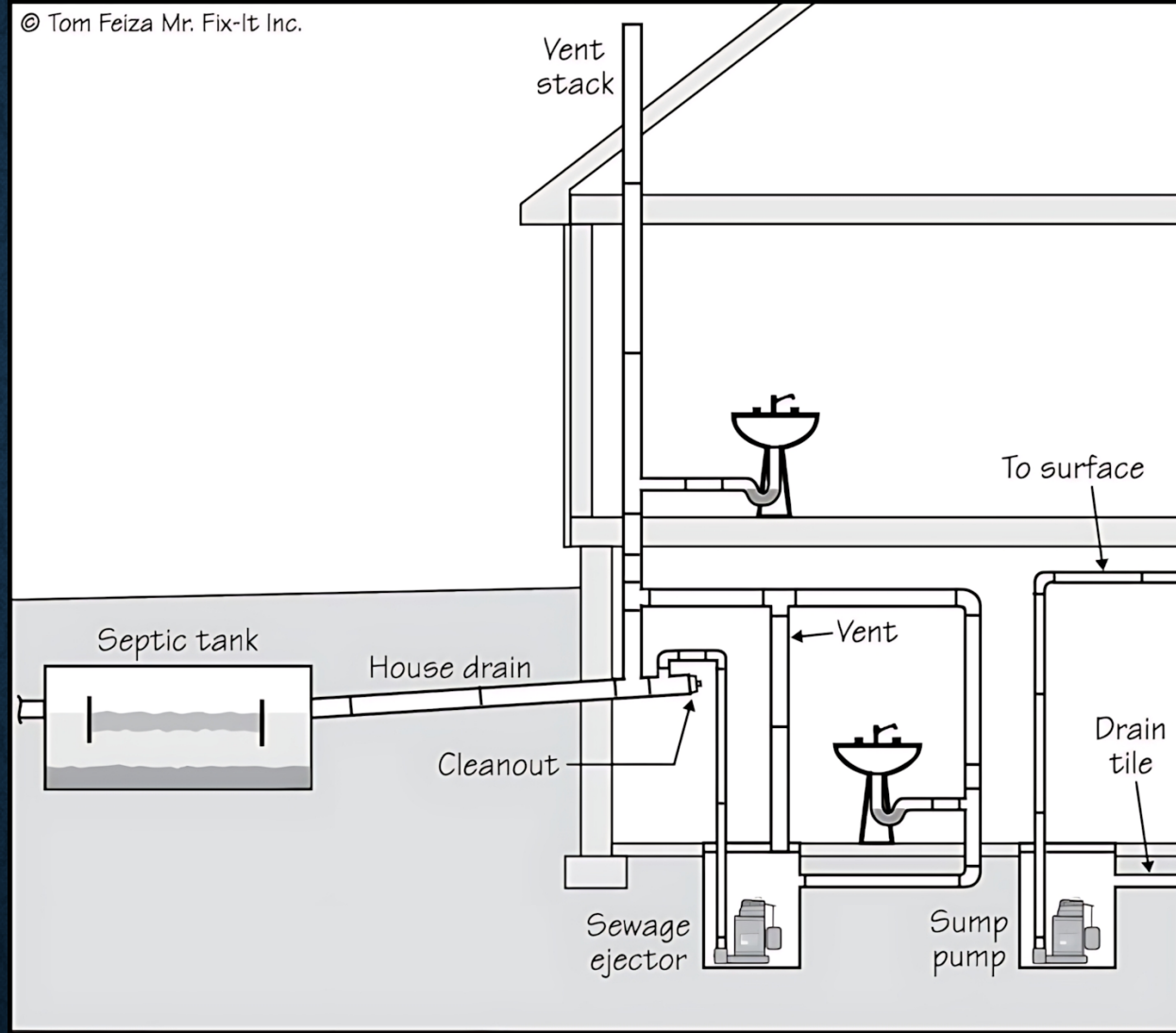
- Final connection required by Fall 2031

Existing well can be used for outside spigots and irrigation.

- If desired, irrigation meter can be purchased for irrigation and outside spigots.

# Sewage Ejector Pump

© Tom Feiza Mr. Fix-It Inc.

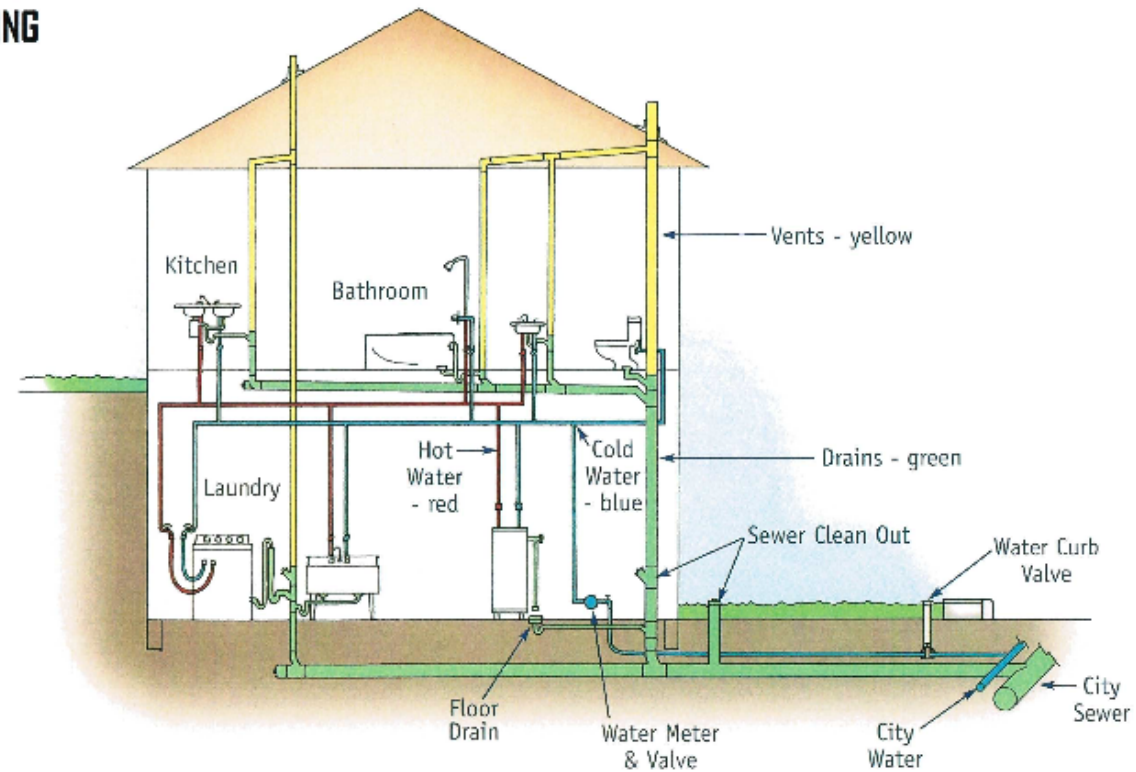


P021

Adopted from Mr. Fix-it Inc, from Tom Feiza

[https://scontent-msp1-1.xx.fbcdn.net/v/t39.30808-6/559697607\\_798800009569567\\_1688464381339003117\\_n.jpg?\\_nc\\_cat=105&ccb=1-7&\\_nc\\_sid=0b6b33&\\_nc\\_ohc=ItCE6KzYcbwQ7kNvwGAfn3J&\\_nc\\_oc=Adq8gqTfqKLfjdrewKmsTTOzdxwgBY3cuJKVa60XHfaYlr6IxAXy5CPGzr6u9aqCzts&\\_nc\\_zt=23&\\_nc\\_ht=scontent-msp1-1.xx&\\_nc\\_gid=4Eq3Ndl\\_AlO55I0sbU8K2w&\\_nc\\_ss=7b289&oh=00\\_Af5A-hllMkNIBwM\\_1KwHbUKO0rJULDJT0HnOoF5sFOq\\_JQ&oe=6A093062](https://scontent-msp1-1.xx.fbcdn.net/v/t39.30808-6/559697607_798800009569567_1688464381339003117_n.jpg?_nc_cat=105&ccb=1-7&_nc_sid=0b6b33&_nc_ohc=ItCE6KzYcbwQ7kNvwGAfn3J&_nc_oc=Adq8gqTfqKLfjdrewKmsTTOzdxwgBY3cuJKVa60XHfaYlr6IxAXy5CPGzr6u9aqCzts&_nc_zt=23&_nc_ht=scontent-msp1-1.xx&_nc_gid=4Eq3Ndl_AlO55I0sbU8K2w&_nc_ss=7b289&oh=00_Af5A-hllMkNIBwM_1KwHbUKO0rJULDJT0HnOoF5sFOq_JQ&oe=6A093062)

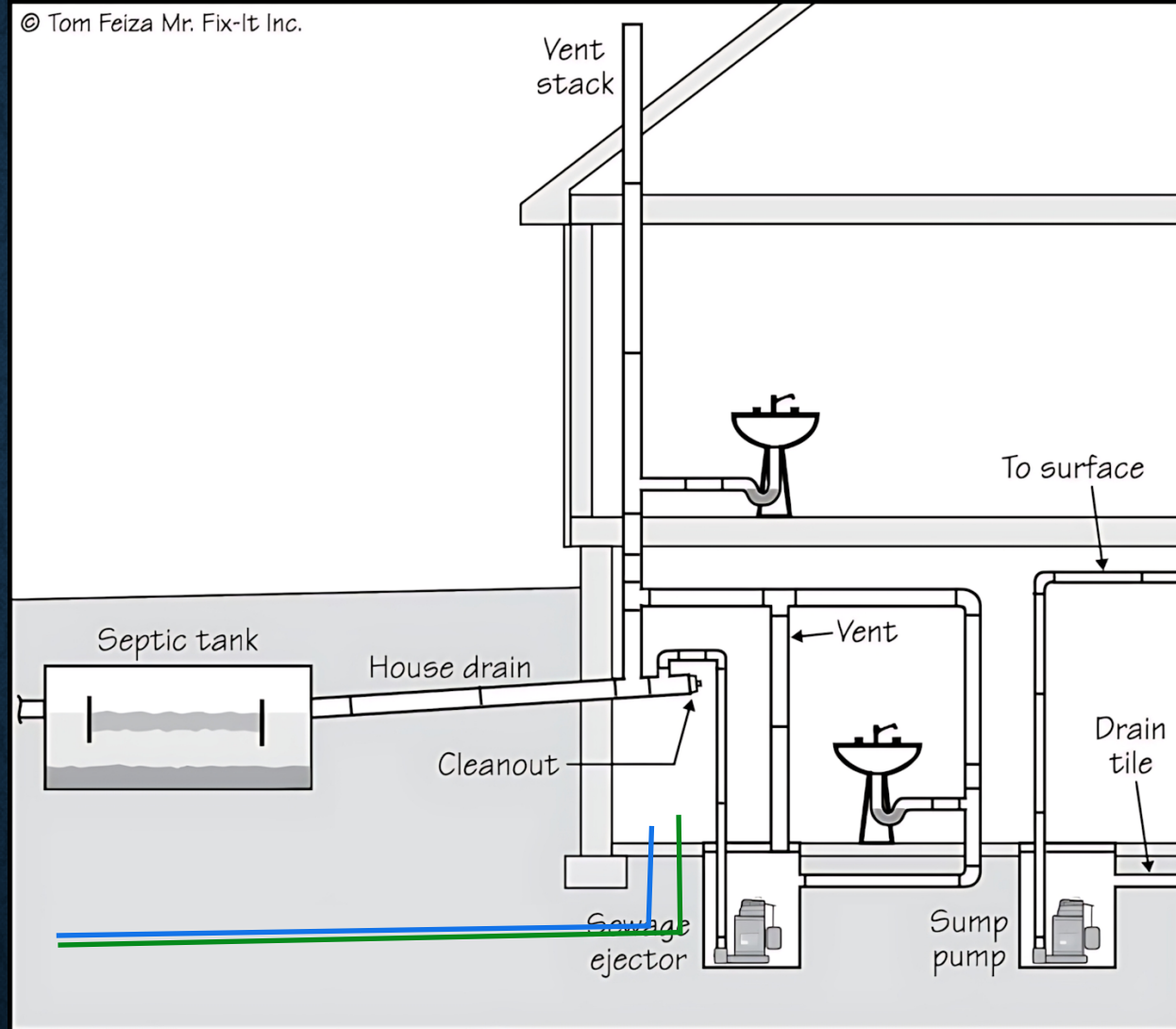
## TYPICAL SEWER, DRAIN, VENT, AND WATER PIPING



Adopted from Shelton Plumbing by John Shelton.  
[Plumbing 101 Diagrams for Homeowners](#) | [John Shelton Plumbing](#)

# Sewage Ejector Pump

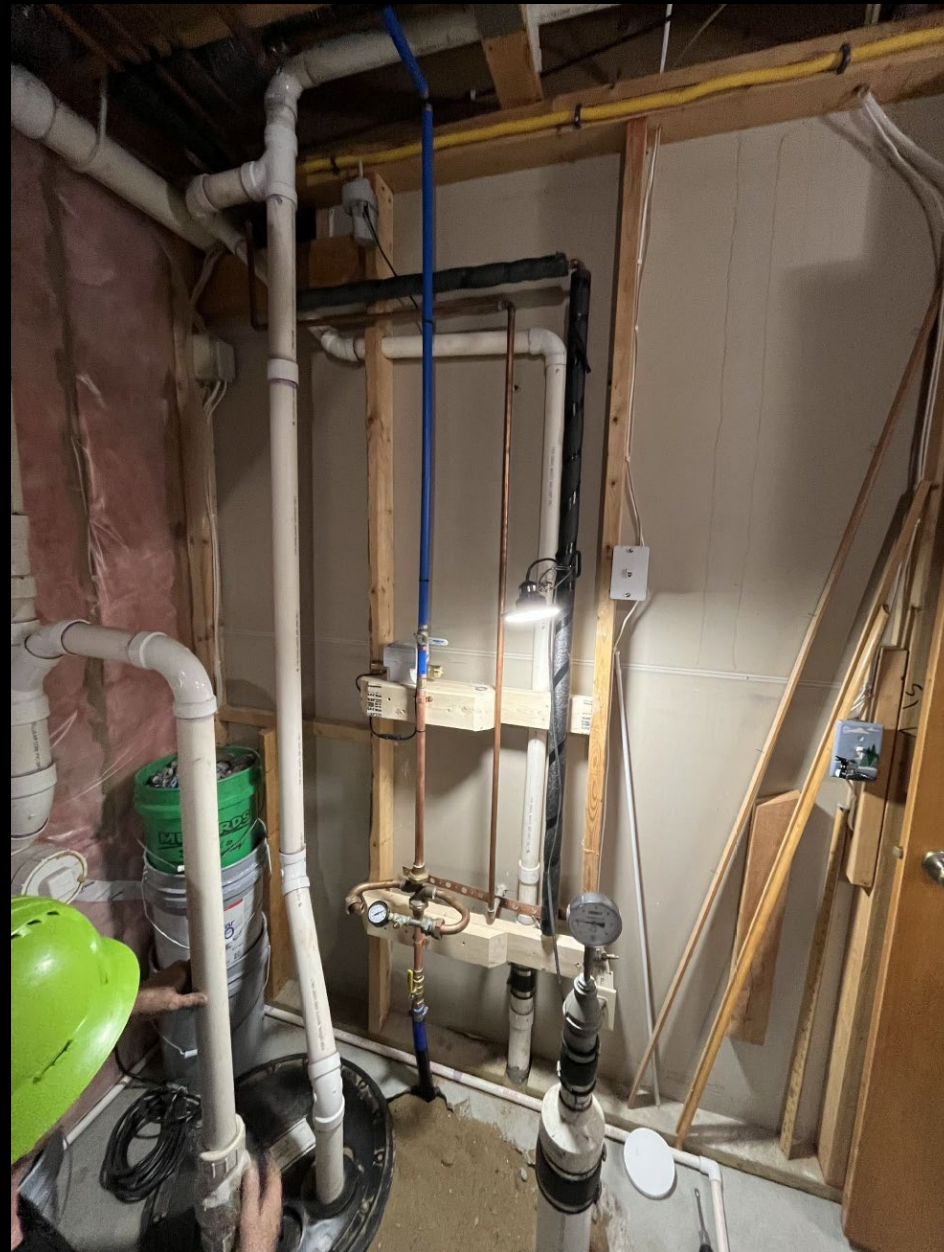
© Tom Feiza Mr. Fix-It Inc.



P021

Adopted from Mr. Fix-it Inc, from Tom Feiza

[https://scontent-msp1-1.xx.fbcdn.net/v/t39.30808-6/559697607\\_798800009569567\\_1688464381339003117\\_n.jpg?\\_nc\\_cat=105&ccb=1-7&\\_nc\\_sid=0b6b33&\\_nc\\_ohc=ItCE6KzYcbwQ7kNvwGAfn3J&\\_nc\\_oc=Adq8gqTfqKLfjdrewKmsTTOzdxwgBY3cuJKVa60XHfaYlr6IxAXy5CPGzr6u9aqCzts&\\_nc\\_zt=23&\\_nc\\_ht=scontent-msp1-1.xx&\\_nc\\_gid=4Eq3Nd1\\_AlO55I0sbU8K2w&\\_nc\\_ss=7b289&oh=00\\_Af5A-hllMkNIBwM\\_1KwHbUKO0rJULDJT0HnOoF5sFOq\\_JQ&oe=6A093062](https://scontent-msp1-1.xx.fbcdn.net/v/t39.30808-6/559697607_798800009569567_1688464381339003117_n.jpg?_nc_cat=105&ccb=1-7&_nc_sid=0b6b33&_nc_ohc=ItCE6KzYcbwQ7kNvwGAfn3J&_nc_oc=Adq8gqTfqKLfjdrewKmsTTOzdxwgBY3cuJKVa60XHfaYlr6IxAXy5CPGzr6u9aqCzts&_nc_zt=23&_nc_ht=scontent-msp1-1.xx&_nc_gid=4Eq3Nd1_AlO55I0sbU8K2w&_nc_ss=7b289&oh=00_Af5A-hllMkNIBwM_1KwHbUKO0rJULDJT0HnOoF5sFOq_JQ&oe=6A093062)



# BRENTWOOD CIRCLE WATER SERVICES

- Water service pipe was installed with the construction of the houses. (1987 timeframe)
- Water pipe is 160 PSI blue poly with barbed fittings.
  - Notorious for water leaks, pipe gets brittle over time.
- Recommendation to replace water service with sewer service.
  - Can be installed in the same trench as sewer service.



# 2026 CITY RATES

## City Fees Associated with Services

- Excavation Permit Fee - \$55.00
- Sewer and Water Inspection Fee - \$50.00
- Water Meter Charge - \$624.00 + Tax = \$673.14
  
- 1" Irrigation Meter - \$867.00 + Tax = \$935.28
  - Approximately 207,500-gallon payback based on current sewer rates.
    - Approximately 230 hours of irrigation based on 15 gpm irrigation zones.

## Rates per 1,000 Gallons

- Sewer - \$4.51
- Water - \$3.83
  
- Average monthly utility bill including stormwater fee is between \$70.00 - \$85.00
  - Annual stormwater fee gets incorporated in monthly utility bill.

# QUESTIONS?

## Contact Information

- **Luke Evans – Engineering Inspector**
  - 218-513-9001
  - [levans@baxtermn.gov](mailto:levans@baxtermn.gov)
- Trevor Thompson – Assistant City Engineer
  - 218-513-6335
  - [tthompson@baxtermn.gov](mailto:tthompson@baxtermn.gov)