

TH 371B (South 6th Street) at Willow Street Roundabout
Brainerd, Minnesota



BRAINERD
MINNESOTA
A City for all Seasons

BRDMN 173744

Project Update

SEH Staff

Construction Engineer

Paul Sandy, PE
(320) 630-4657

Resident Project Representative

Shane Murphy
(612) 226-7984

City Public Works

Jessie Dehn, City Engineer
jdehn@ci.brainerd.mn.us
(218) 828-2307

Contractors

Prime Contractor

Landwehr Construction

Project Manager

Bryan Pearson
(320) 577-9697

Superintendent

Clint Christians
(320) 248-0889

Subcontractors

Concrete

French Lake Concrete

Asphalt Paving

TBD

Landscaping/Turf

Doucette's Landscaping



July 2025 | Project Update No. 1

Overview

The City of Brainerd and Minnesota Department of Transportation (MnDOT) have partnered together and contracted Landwehr Construction of St. Cloud, MN to construct a roundabout at the intersection of Highway 371B (South 6th Street) and include reconstruction of Willow Street from South 6th to South 7th Streets. The City has contracted with the engineering firm Short, Elliot, Hendrickson (SEH) to design the improvements and provide construction oversight during contractor construction operations.

Project Details

The project includes reconfiguration of the existing two-way stop-controlled intersection at Hwy 371B (S 6th Street) and Willow Street into a roundabout. This includes excavation of the existing roadway, replacement of mainline watermain, sanitary sewer mains, storm sewer mains along with associated catch basins. New sidewalks, pavement and curbs will be installed in the project area to improve accessibility and safety of all users. New water and sanitary sewer lines will be extended to each property from the main line in the street to the property line of each property and connected to the existing water and sewer services on private property.

You have probably already noticed private utility companies (electric, natural gas, telephone, cable TV, etc.) marking their private utilities and working in the project area. This will continue throughout the construction process. Private utility relocations will be taking place to accommodate construction and to avoid conflicts with the roundabout and other utility infrastructure. Any service interruption will be communicated by each utility provider. Note, the City, SEH, and Contractor do not direct or control the operations for these private utilities.

In addition to private utility relocations, the Contractor plans to have crews on site beginning on August 4, 2025, for grading, topsoil stripping, and removal operations. SEH staff will be on-site marking removals and staking starting the week of July 28, 2025. Note that all construction schedules are subject to change based on external factors.

Project Team

The project team consists of the City of Brainerd, MnDOT, Landwehr Construction, and SEH. SEH is the engineering firm that serves as the contact between the contractors and residents/property owners. All general questions should initially be directed to SEH personnel.

Shane Murphy, SEH's field representative, will be on-site during active construction operations to observe and document progress. Shane is the fastest link to problem solving because he will communicate directly with everyone on the construction team. Do not hesitate to reach out to Shane directly as the project progresses. If you are unable to reach Shane, please reach out to the Project Engineer, Paul Sandy, in the SEH office.

Property Owner Considerations

Access & Parking

The City and Contractor will strive to minimize disruption to the property owners within the construction limits of the project. There will be times during certain construction operations where access to the street may be limited or unavailable. Particularly, during underground utility construction and installation of curbs/driveways, the roadway will be inaccessible to traffic. The Contractor and other on-site representatives will coordinate with the adjacent properties when this occurs to allow for those affected to make alternate accommodations.

Parking is generally not permitted within the work area. Please arrange to find an off-street parking location or alternative nearby street to utilize for parking during construction.

Landscaping & Irrigation

The Contractor will be allowed the entire right-of-way to perform their work. If you have irrigation lines within the area planned for construction, please arrange to have these lines temporarily relocated out of the construction area until the work is completed. The lines can be re-installed after construction is complete.

If there is landscaping or other belongings within the right-of-way that you would like to have preserved, please make arrangements to have these items relocated prior to construction commencing. Please contact SEH staff if you are unsure if your irrigation or landscaping will be affected.

Mail and Garbage

It is the Contractor's responsibility to ensure accommodations for mail delivery and garbage pickup. Staff and the contractor coordinate with the USPS carrier to determine the necessary means for mail delivery during construction. Typically, temporary mailboxes will be set up at an alternative location for mail delivery during construction.

For garbage pickup, the Contractor will typically pick up residential waste cans from the end of driveways to the location where the collectors can access. The Contractor will return the cans to the residences afterwards.

Water Outages

There will likely be times when water service may be disrupted for short periods of time, typically 4-6 hours. The Contractor will be required to give 48 hours' notice prior to disrupting your water service. Look for doorknob hangers as this is how notices are provided.

Survey Marks and Flags

SEH has been assisting in private utility relocation plans and will be observing the contractor progress on-site, including survey staking for the proposed removals and improvements on site. There has been and will continue to be on-going periodic survey crew activity by SEH, which includes installing wooden lathe and ribbons. Please do not disturb the survey stakes and utility flags as they are necessary for assisting with construction activities and for safety.

Construction Zone

To help ensure the safety of motorists and construction crews, detour, barricade, and road closure signs will be placed throughout the project area. Please pay close attention to all posted signage.

- **“Road Closed” and “Detour”** signs indicate that the road is not passable and is closed to all traffic—except for construction equipment and officially authorized vehicles.
- **“Road Closed to Thru Traffic”** signs mean that while the road is closed to through traffic, local traffic—such as residents or businesses located on the street under construction—may still travel up to the closure point.

We appreciate your cooperation and ask that you follow all posted signs to ensure safety and avoid delays.

Access to your property is important to us. The Contractor will make every effort to minimize periods when access may be limited. When necessary, the Contractor will coordinate directly with residents and businesses to address specific access needs during certain operations.

Attached to this newsletter are the project-specific detour maps. There are two detour routes:

- **Truck Detour:** Utilizes CR 117 (Industrial Park Road), CR 45 (13th Street SE), and Trunk Highway 210.
- **Passenger Vehicle/Local Traffic Detour:** Utilizes Joseph Street, S 7th Street, and Vine Street.

Thank you for your patience and cooperation during this project.

Project Updates

Public Works Department and SEH staff will be meeting with the Contractor throughout the construction project to discuss project details and upcoming timelines. If you have questions regarding construction, please contact the Engineering or SEH staff (contact info on the front page).

SEH is hosting a project website where specific project updates, access to detour maps, and other project associated information will be posted when it becomes available. To access the page, utilize the link below.

[Brainerd 2025 TH371B & Willow St Roundabout and Intersection Improvement Project](https://ci.brainerd.mn.us/165/Engineering-Department)

The City of Brainerd Public Works Department has a project specific webpage that can also be used to direct you to SEH's construction webpage. To access the page, you can use the camera on your smartphone to hover over the QR Code. Click on the pop-up link and you will be directed to the Engineering page.

<https://ci.brainerd.mn.us/165/Engineering-Department>



Construction Dates

Contract Start Date

June 23, 2025

Expected Start of Construction

August 4, 2025

Anticipated Completion

Late October 2025

Public Works

501 Laurel Street

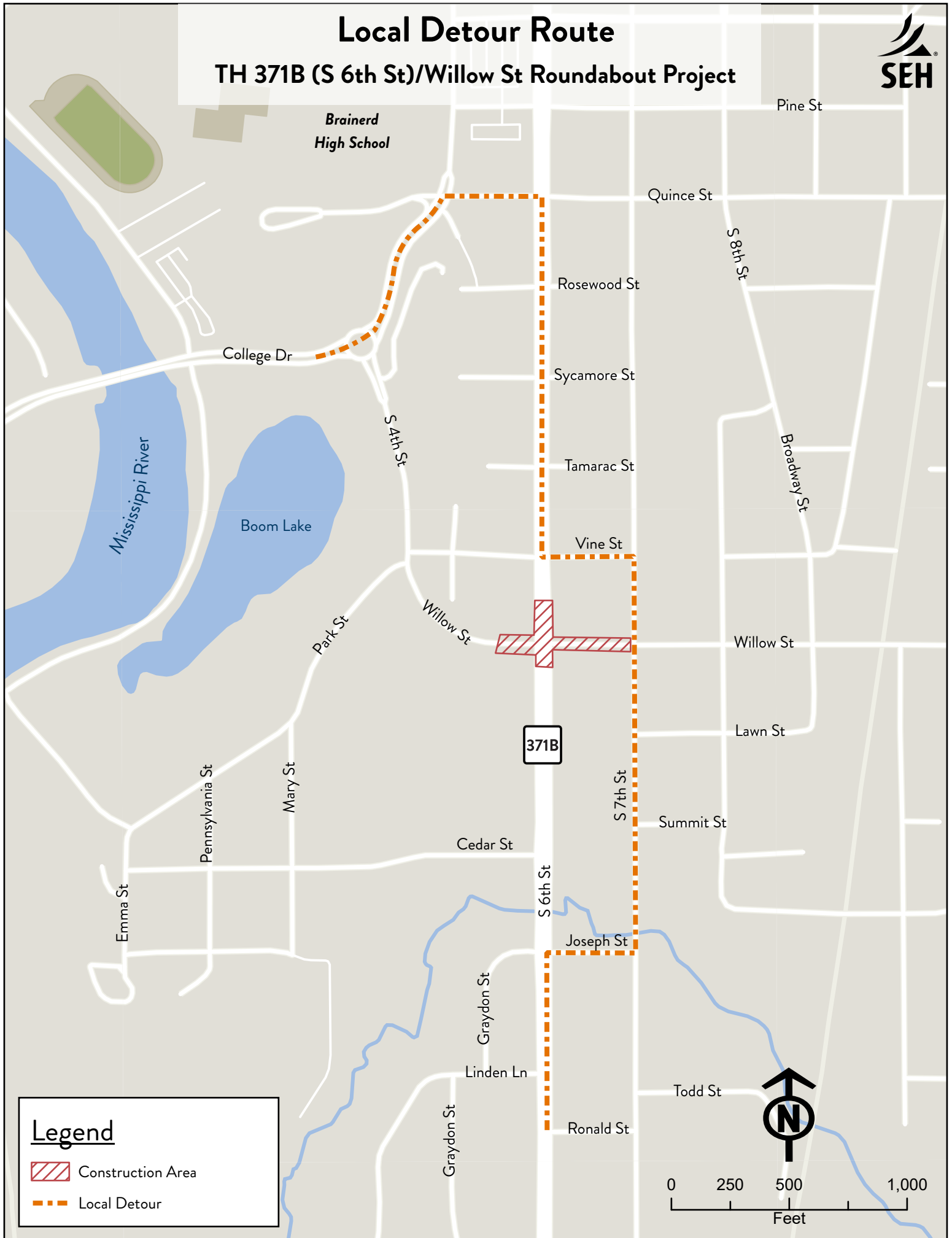
Brainerd, MN 56401

(218) 828-2307

Engineer@ci.brainerd.mn.us

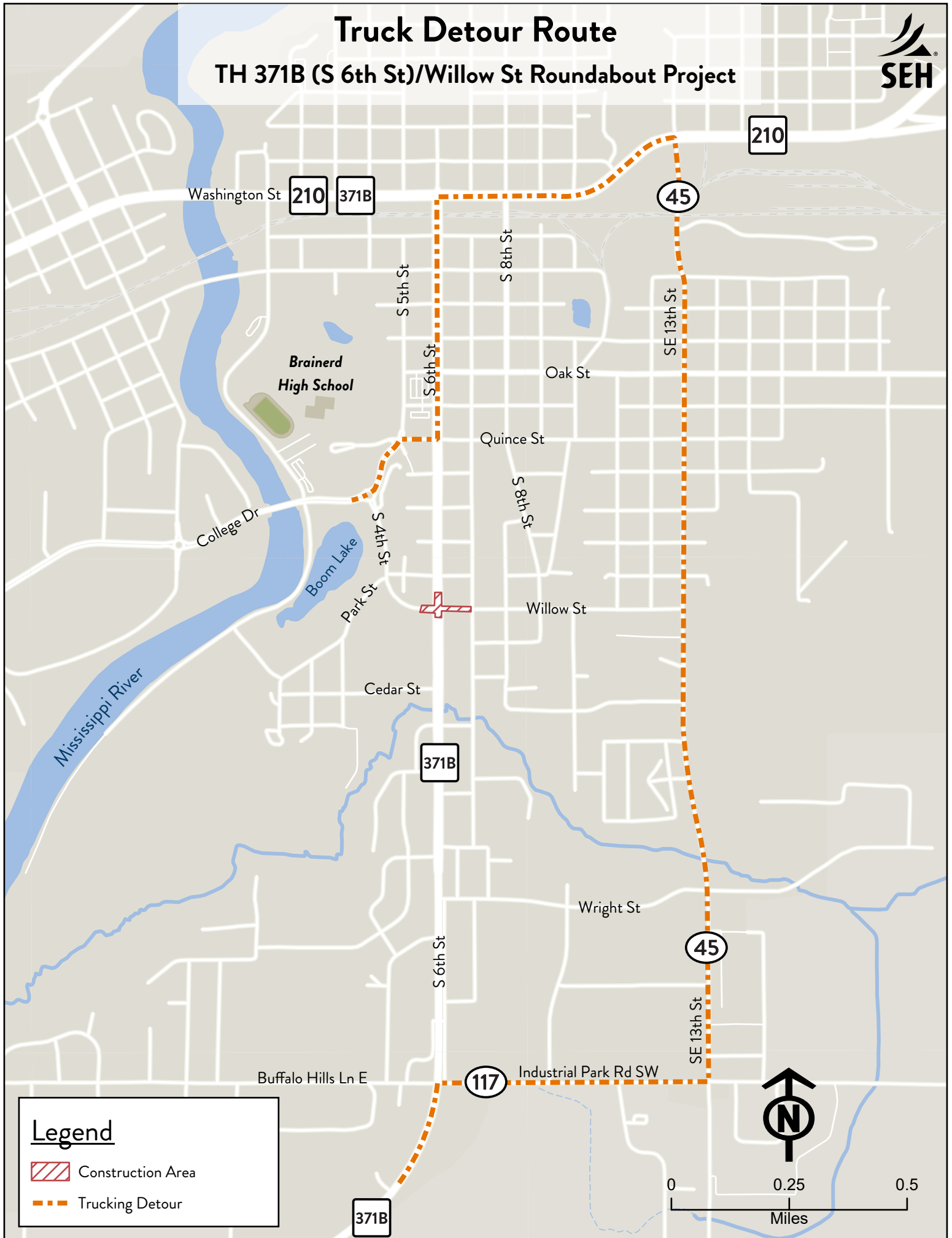
Local Detour Route

TH 371B (S 6th St)/Willow St Roundabout Project





Truck Detour Route

TH 371B (S 6th St)/Willow St Roundabout Project



Legend

-  Construction Area
-  Trucking Detour



0 0.25 0.5
Miles