

Jarod Griffith

From: Jarod Griffith
Sent: Tuesday, August 26, 2025 12:39 AM
To: Jarod Griffith
Subject: City of Foley 2025 Northside Improvements and 2025 LSL Replacement Project Update - August 25th, 2025

Residents and Project Stakeholders:

Hello and welcome again to the 2025 Foley Northside Street & Utility Improvements and 2025 Foley Lead Water Service Replacement Project Updates. The intent of the updates is to notify residents and other interested parties of recent and upcoming work, and to provide relevant details related to the construction activity. Please pass along this update to others in your home or adjacent residents and encourage them to provide email address to Melissa Blommel (mblommel@sehinc.com) to get added to this distribution list. **All project updates moving forward will be by electronic means only – email and the project website (address below).**

The project team would like to thank you for your continued patience and cooperation with the construction activities thus far. Feel free to continue to contact SEH with any questions or concerns regarding the project. We hope to respond in a timely manner. However, when more than one team member needs to be consulted, it may take a little longer to provide you with accurate up-to-date information.

Chris Anderson, SEH's Field Representative, will be on-site during active construction to observe project progress. He is the fastest link to problem solving because he communicates directly with everyone on the construction team. Do not hesitate to contact Chris at 320.290.5579 with any questions you may have. If you are unable to reach him in the field, please contact Jarod Griffith at 320.229.4304 or jgriffith@sehinc.com in the SEH office.

[Project Schedule/ Upcoming Work:](#)

NORTHSIDE STREET & UTILITY IMPROVEMENTS PROJECT

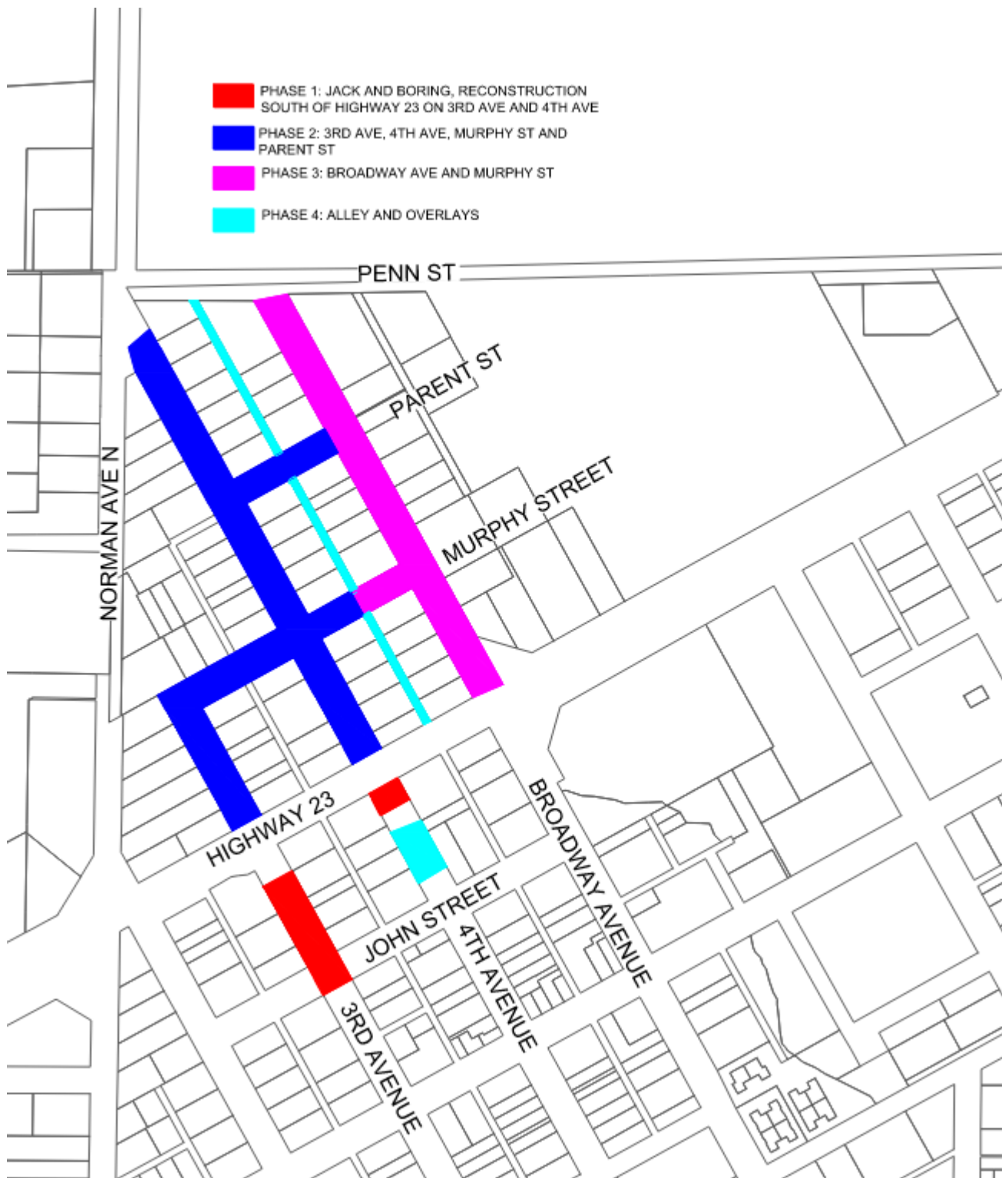
The Contractor, Kuechle Underground has advised the following planned activities, subject to change and the weather (note, the wet weather has been slowing progress on the project to date):

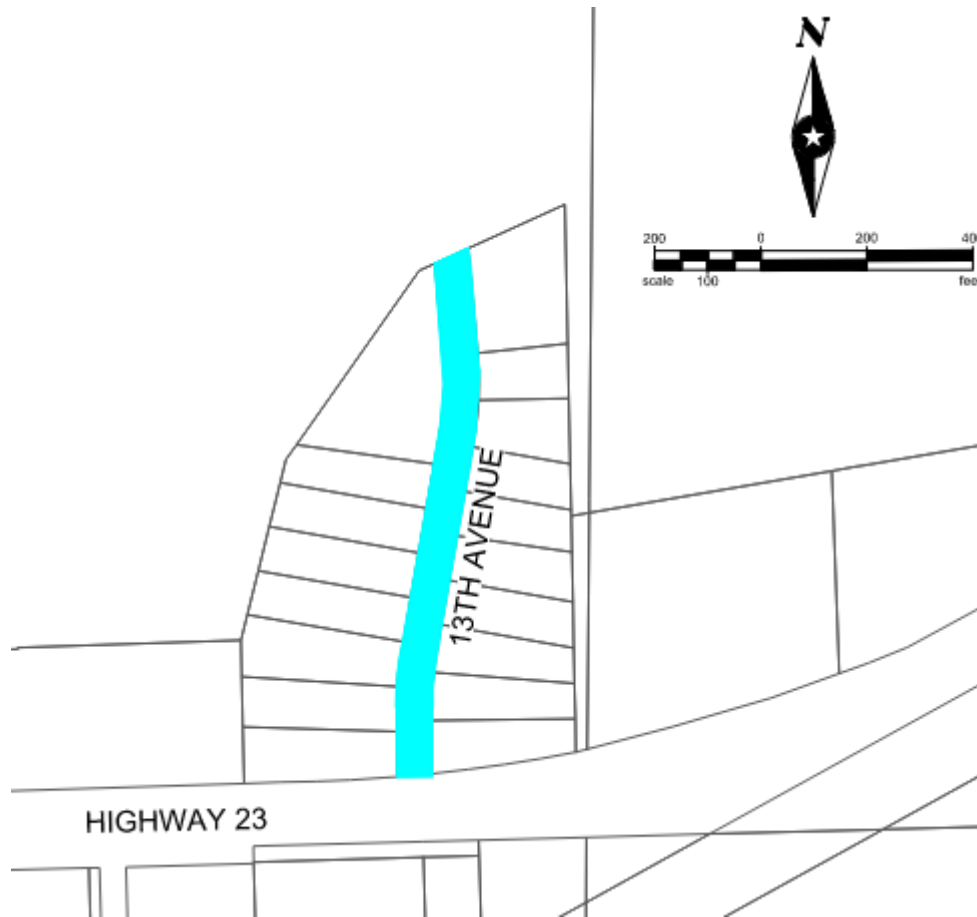
- **Construction Activity Since the Last Project Update**
 - Sanitary sewer installation in Phase 2 (3rd Avenue and 4th Avenue from HWY 23 to Murphy Street, and Murphy Street from 3rd Avenue to 4th Avenue)
 - Watermain installation in Phase 2 (3rd Avenue and 4th Avenue from HWY 23 to Murphy Street, and Murphy Street from 3rd Avenue to 4th Avenue)
 - Storm sewer installation in Phase 2 (3rd Avenue and 4th Avenue from HWY 23 to Murphy Street, and Murphy Street from 3rd Avenue to 4th Avenue)
 - Sanitary and water service installation in Phase 2 (3rd Avenue and 4th Avenue from HWY 23 to Murphy Street, and Murphy Street from 3rd Avenue to 4th Avenue)
 - Road excavation and gravel installation in Phase 1 (3rd Avenue and 4th Avenue south of HWY 23)

- Road excavation and gravel installation in Phase 2 (3rd Avenue from HWY 23 to Murphy Street)
- *Planned Work the Week of August 25th:*
 - Sanitary sewer installation in Phase 2 (4th Avenue from Murphy Street to Parent Street)
 - Watermain installation in Phase 2 (4th Avenue from Murphy Street to Parent Street and at Norman Avenue intersection)
 - Sanitary and water service installation in Phase 2 (4th Avenue from Murphy Street to Parent Street)
 - Storm sewer installation in Phase 2 (4th Avenue from Murphy Street to Parent Street)
 - Road excavation and gravel installation in Phase 2 (Murphy Street from 3rd Avenue to 4th Avenue)
 - Road excavation and gravel installation in Phase 2 (4th Avenue from HWY 23 to Murphy Street and at Norman Avenue intersection)
 - Concrete curb and flat work installation in Phase 1 (3rd Avenue and 4th Avenue south of HWY 23)
 - Concrete curb and flat work installation in Phase 2 (3rd Avenue from HWY 23 to Murphy Street and Murphy Street from 3rd Avenue to 4th Avenue)
 - **Reclaim road surface in Phase 3 (Broadway Avenue from HWY 23 to Penn Street and Murphy Street from 4th Avenue to Broadway Avenue)**
 - **Reclaim road surface in Phase 4 (13th Avenue)**
- *Planned Work the Week of September 1st:*
 - Sanitary sewer installation in Phase 2 (4th Avenue from Parent Street to Norman Avenue)
 - Watermain installation in Phase 2 (4th Avenue from Parent Street to Norman Avenue)
 - Sanitary and water service installation in Phase 2 (4th Avenue from Parent Street to Norman Avenue)
 - Bituminous paving in Phase 1 (3rd Avenue and 4th Avenue south of HWY 23)
 - Bituminous paving in Phase 2 (3rd Avenue from HWY 23 to Murphy Street and Murphy Street from 3rd Avenue to 4th Avenue)
- *Remainder of September:*
 - The following activities will begin to occur as the above work items gets completed (with more specific timing details conveyed in upcoming project updates):
 - Finish utility installation in Phase 2 (4th Avenue and Parent Street storm sewer).
 - Start utility installation in Phase 3 (Broadway Avenue and Murphy Street sanitary sewer, watermain, and storm sewer).
 - Road excavation and gravel installation in Phase 2 (4th Avenue and Parent Street)
 - Concrete curb and flat work installation in Phase 2 (4th Avenue and Parent Street)
 - Bituminous paving in Phase 2 (4th Avenue and Parent Street)
 - Start utility installation in Phase 4 (13th Avenue drain tile and storm sewer)

24-hour Emergency Contact:

If you need assistance related to access or other construction related problems, the primary contact from **Kuechle Underground** is **David Baker**, phone number **320.493.1340**.





LEAD WATER SERVICE REPLACEMENT PROJECT

The Contractor, Levanen Underground has advised the following planned activities, subject to change and the weather (note, the wet weather has been slowing progress on the project to date):

- *Construction Activity since last Project Update:*
 - Electrical ground replacements in Phase 3.
 - Water service replacements in Phase 2 and 3.
 - Interior plumbing connections in Phase 2.
- *Planned Work the Week of August 25th:*
 - Turf restoration in Phase 2 and Phase 3.
 - Interior plumbing connections in Phase 3.
- *Planned Work the Week of September 1st*
 - Electrical ground replacements south of HWY 23.
- *Remainder of September 8th:*
 - Water service replacements south of HWY 23.
 - Interior plumbing connections south of HWY 23.
 - Surface and turf restorations south of HWY 23.

24-hour Emergency Contact:

If you need assistance related to your water service or other construction related problems, the primary contact from Levanen Underground is **Clint Levanen, phone number 320.292.1209**.

Both construction projects are planned to be substantially completed in 2025, weather permitting, subject to change.

Please remember that construction schedules can change at a moment's notice because of weather, delays by subcontractors, or other unforeseen events.

Special Information:

It is very important that anyone with special needs or disabilities contact us as soon as possible. We are in continuous contact with emergency response organizations, so they are aware of the construction progress and if quick response is needed to any specific residence(s), there is a plan in place. Contact Chris Anderson with SEH at 320.290.5579.

Temporary Water:

In order to build the new water main, the contractor will need to shut off the existing water system. As a result of this disconnect, the Contractor will be supplying you with an above-ground, temporary water service that will be in place throughout construction. Once the new water main is in place and passes all required disinfection testing, the contractor will remove your temporary service and reconnect you to the new pipe. You may experience small outages in water service while the contractor switches back and forth between the existing system and the temporary system; however, efforts will be made to minimize disruption to the water service.

Construction Zone and Access:

Barricade and road closure signs will be installed throughout the project area to protect motorists and pedestrians during construction. Please pay careful attention to the warning signs! "Road Closed" signs are used where the road is impassable and closed to all traffic except for the Contractor's equipment or officially authorized vehicles. "Road Closed to Thru Traffic" signs are used where through traffic must detour to avoid a closure some distance beyond the sign, but where local traffic can move up to the point of closure. In this instance, local traffic would be defined as residential traffic from the particular street under construction. **Phases 1, 2, and 3 have been closed to thru traffic until construction is suspended for the winter.**

Please continue to avoid any parking on the street during active construction, 7am to 7pm.

There will also be times during construction that direct access to your driveway will be limited. Short term access limitations will occur when road excavation (subcut or sanitary sewer, watermain, and storm sewer installation) and paving operations are adjacent to your property, but access will be restored before the end of the day. Long term access limitations will occur when curb and concrete driveways are installed, up to 7 days per operation. Our goal is to be able to coordinate the project such that alley access will be available when street access is not. **Access to your property is important to us, and Contractor will work to proactively communicate those disruptions to you.** If you need assistance or have questions, please contact Chris Anderson with SEH at 320.290.5579.

Allow extra time in your schedule as you drive through the construction zone. **Please advise your children and guests to exercise caution while in the construction zone.** Be sure workers and heavy equipment operators can see you at all times.

School & Busing:

Foley Public Schools will be starting on Tuesday, September 2nd. Our project streets will be closed to thru traffic until construction is suspended for the winter. Please access the Foley Public Schools by either Norman Avenue or the roundabout at HWY 23/8th Avenue/Penn Street. Our project team has been working with the Foley Public School transportation team on the construction impacts to the busing routes and stop locations. A bus stop will be located on Norman Avenue straight west of Murphy Street for students normally picked up on 3rd Avenue north of HWY 23. Additional information on school busing routes and stop locations will be provided at the Public School's open house on Wednesday, August 27th.

Project Website:

Please note the link below, which includes information about the project, including copies of all Project Updates.

Link: <https://www.sehinc.com/northside>

Thank you,

Jarod R. Griffith, PE (MN)
Engineer IV
Short Elliott Hendrickson, Inc.
320.229.4304 direct | 218.849.0539 mobile | 320.229.4300 main

Building a Better World for All of Us®

100% Employee Owned

Follow SEH on [Twitter](#) | [Facebook](#) | [LinkedIn](#) | [Instagram](#)